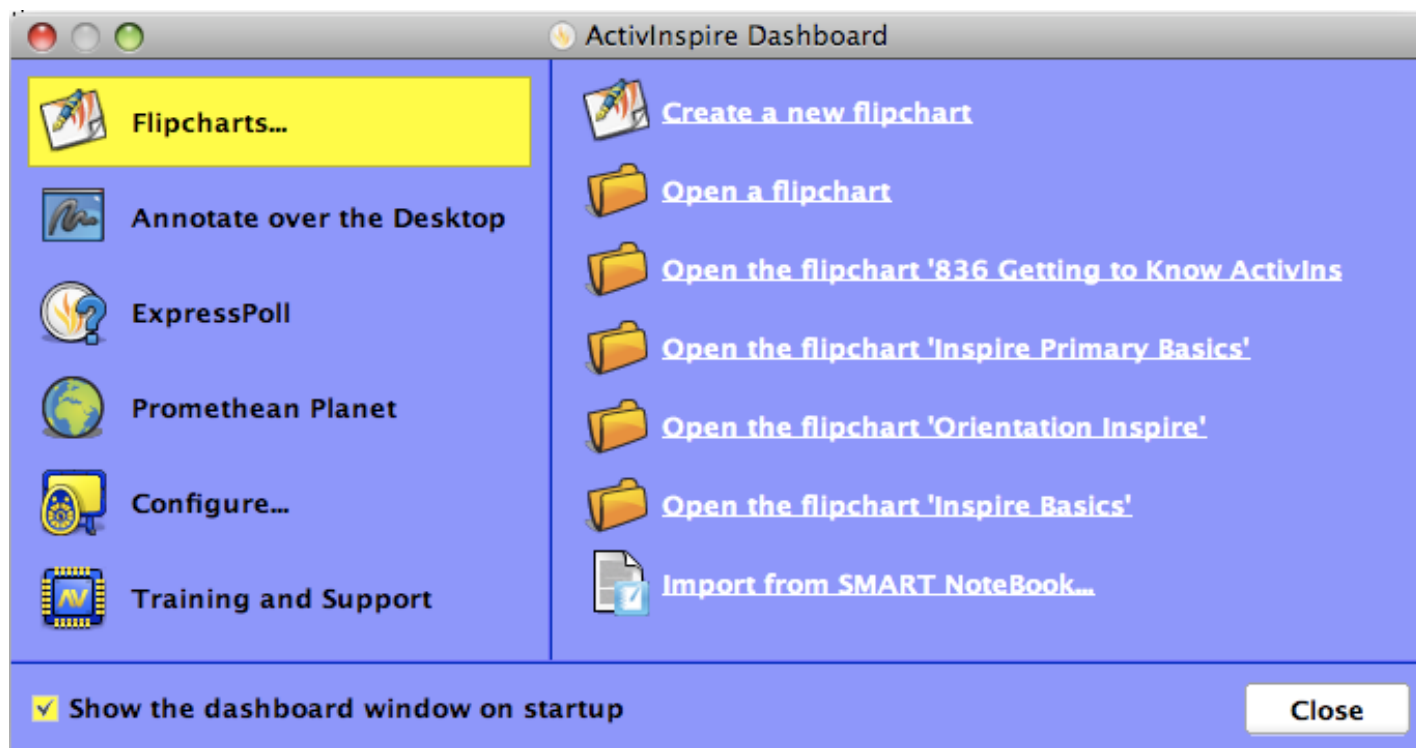








ActivInspire- Primary Quick Guide



-  ➤ **Flipcharts** – Allows you to open a new flipchart, open a saved flipchart, open previously opened flipcharts
-  ➤ **Annotate over the Desktop** – Allows you to use all of ActivInspire’s tools on top of any document or software open on your desktop
-  ➤ **ExpressPoll** – Activates your Learner Response Systems (ActiVotes or ActiExpressions). This button is also available on your toolstrip.
-  ➤ **Promethean Planet** – Quick link to www.prometheanplanet.com where under the Resources Tab, you can complete a search to download flipcharts that teachers and edit it to make it your own.
-  ➤ **Configure**- Under this tab, you can 1.) Register your Devices (ActiVotes, ActiExpressions, ActiSlates, ActiViews) 2.) Manage your Profiles, which has to do with customizing your toolstrip 3.) Check for new software updates 4.) Change from ActivInspire-Studio mode to ActivInspire- Primary mode by clicking the box at the bottom then closing and re-opening software.
-  ➤ **Training and Support**- Quick link to www.prometheanworld.com where you can find professional development opportunities and free courses to learn the ActivInspire software.

Browser Panel



Object Browser
Notes Browser
Properties Browser
Action Browser
Voting Browser

Highlighter

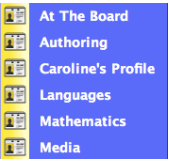
Pen

Erasers



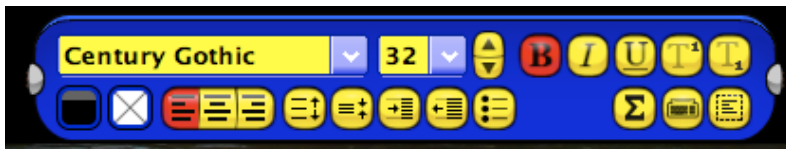
Color Palette

Toolstrip



- Main Menu
- Desktop Annotate
- Page Navigation Arrows
- Start/Stop Voting
- Select Arrow
- Pen Tool
- Shape Tool
- Insert Media
- Resource Browser
- Clear Tool
- Undo Tool
- Switch Profiles
- Desktop Tools
- Express Poll
- More Tools
- Fill Tool
- Connector Tool
- Text Tool
- Page Browser
- Reset Tool
- Redo Tool

Text Edit Menu



Marquee Handles



Freely Move Object
Rotate Object
Object Edit Menu
Translucency Slider
Group/Ungroup Objects
Bring Object Forward
Bring Object Backward
Duplicate Object
Increase Object Size
Decrease Object Size
Edit Shape Points