

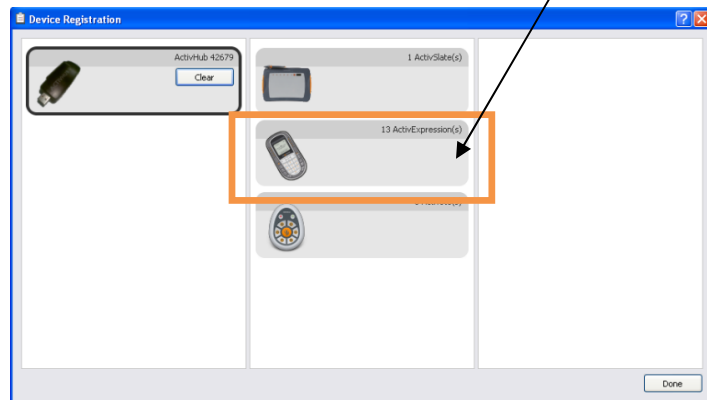
ActivExpression

Registration Guide



1. Take the plastic strip out of the bottom of each device. This activates the batteries in each device (AA).
2. Plug in the ActivHub into a USB port on your computer before launching ActivInspire
3. Open ActivInspire.
4. On the dashboard, select **Configure**. Select the ActivExpression. Choose **Register Devices**.

5. Choose the number of devices you are registering.
6. Click *Allow Expression end used naming* if you want to name each device.



7. Next, follow the directions as follows.
 - a. Power on each device
 - b. Press the **MENU/SYM** button
 - c. Choose **Register** on the top of the screen
 - d. Type in the 3-letter PIN on each device with the buttons next to screen
 - e. Input number or name of each device
 - f. When all devices are registered, the registration screen will close out.

